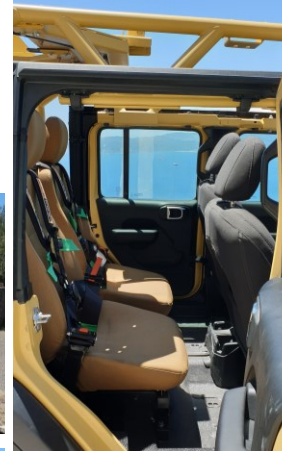




Light Patrol Vehicle (LPV) Prototype



Seating capacity	4
Doors	5 (Optional 1/2 doors)
ENGINE	
Type	Diesel Multijet
Engine capacity	2.2 litres
Power	140kW / 197 hp
Torque	455Nm
Fuel tank capacity	85 litres
Fuel tank driving range	600+ km
Max speed	177km/h
Type	8 speed automatic
Low ratio	2.72:1
WEIGHTS/DIMENSIONS	
Vehicle dimensions	4850mm (L) x 1877mm (W) x 1995mm (H)
Ground clearance	237mm
Wheelbase	3008mm
Gross vehicle weight	3200 kg
Payload minimum	1000 kg (may be extended)
Towing weight-braked	2495kg
PERFORMANCE	
Fording depth	760mm with no modification
Approach angle	41°
Departure angle	35°
Gradeability	100%
Ramp break-over angle	22°
Turning circle	5.9m
FEATURES	
360 degree turret	up to .50 Cal + 2 ammo boxes
Jerry cans holders	4 x 20 Ltr OR 8 x 5.56 Ammo boxes
Seats	Rear tactical seat with ballistic option

AADS

Global Distributor to
Government Organisations